

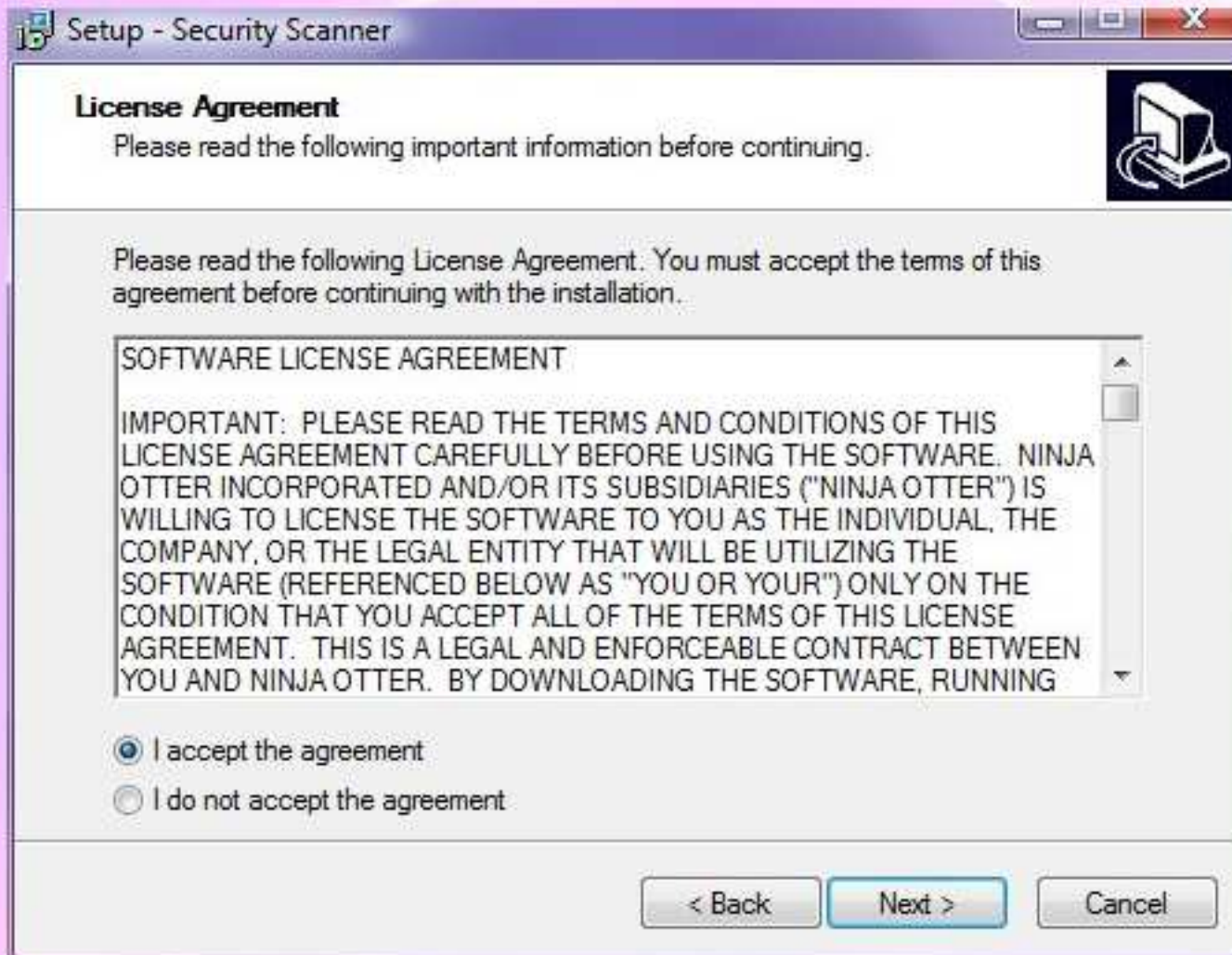
Thank you for using the only dedicated counter-surveillance product on the market today! SpyReveal is a Surveillance/Monitoring spy detector - it does not detect adware! To get started right away, follow this simple tutorial!



You must install and run the product using an administrator account if using Windows 2000/XP/2003/Vista/etc so that the product has access to key system areas for scanning. Windows Vista users will experience a couple of security warning dialogs. You must OK the dialogs in order to install and run the product. This does not apply to WinXP or earlier Windows.



After you download the software package, locate and execute the "SPYREVEAL_SETUP.EXE" file to start the installation setup wizard. You will see the screen above. While SpyReveal does not modify system files, ensure that you have a backup and/or a system restore point before proceeding. Disk errors, power failures, and other unforeseen problems could result in system errors.



You must read and accept the license agreement to continue.



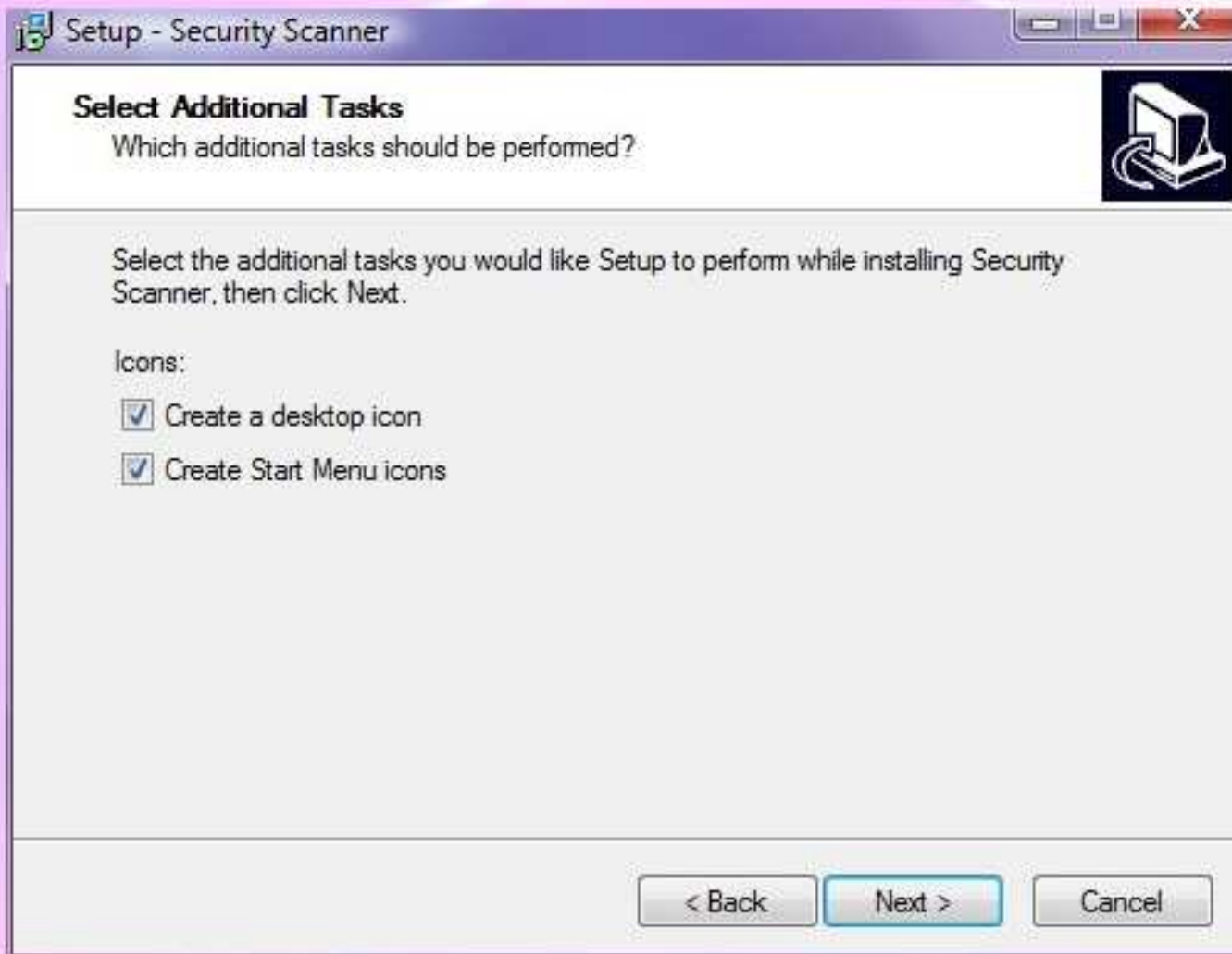
Be sure to read this important information before continuing.



SpyReveal's default installation folder changes periodically and may appear to be strange and incorrect. NEVER INSTALL SPYREVEAL TO A FOLDER CALLED "SPYREVEAL". Certain spy programs will notice this and attempt to interfere with the scan operation. It is best to accept and take note of the default install folder. If you choose to uninstall the product, the files will be removed.



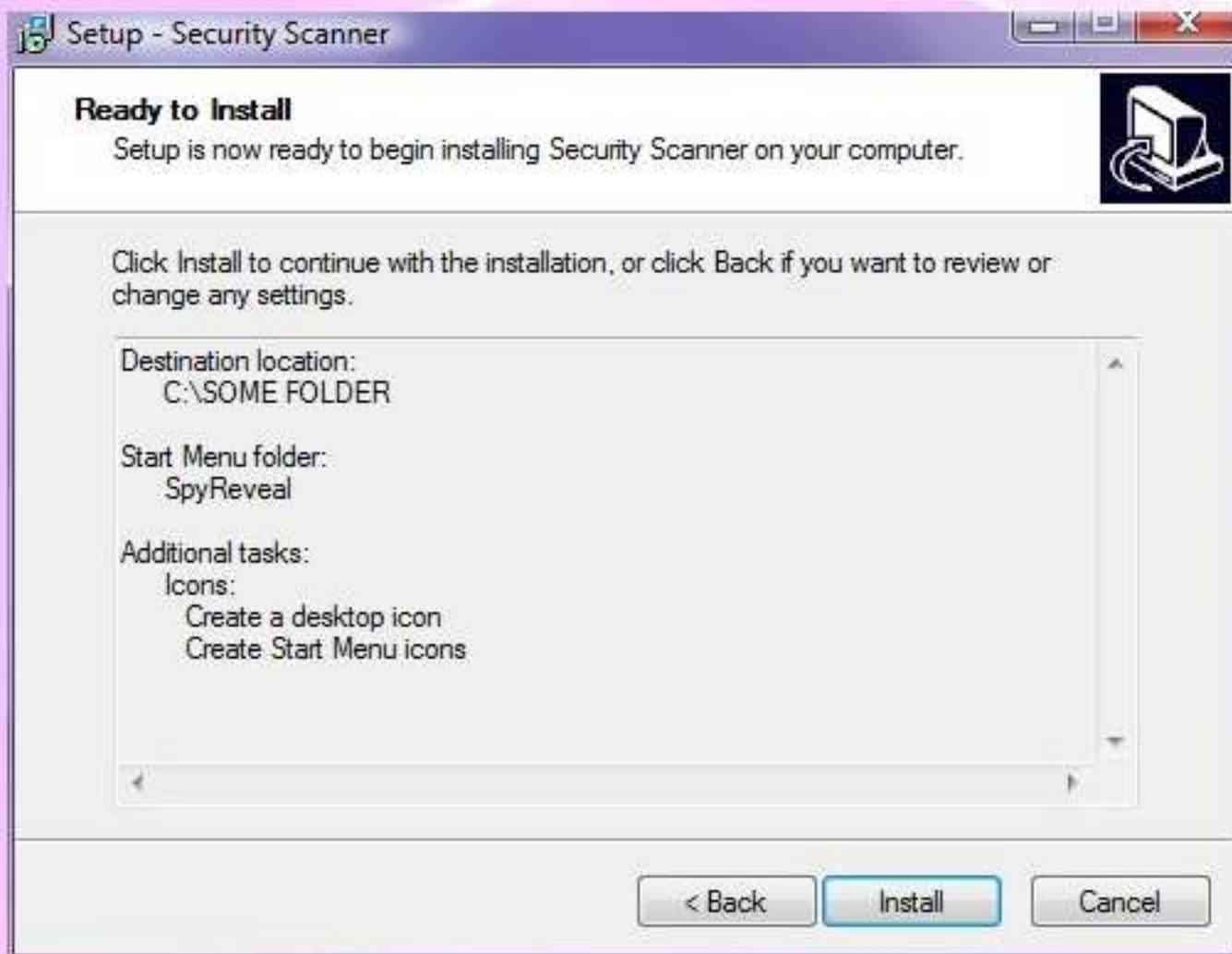
We recommend that you enter a **different** name here to further hide the product. Alternatively, leave this as is and deselect the option to create icons in the next step.



Deselect these boxes to make SpyReveal more invisible to other users on your system .

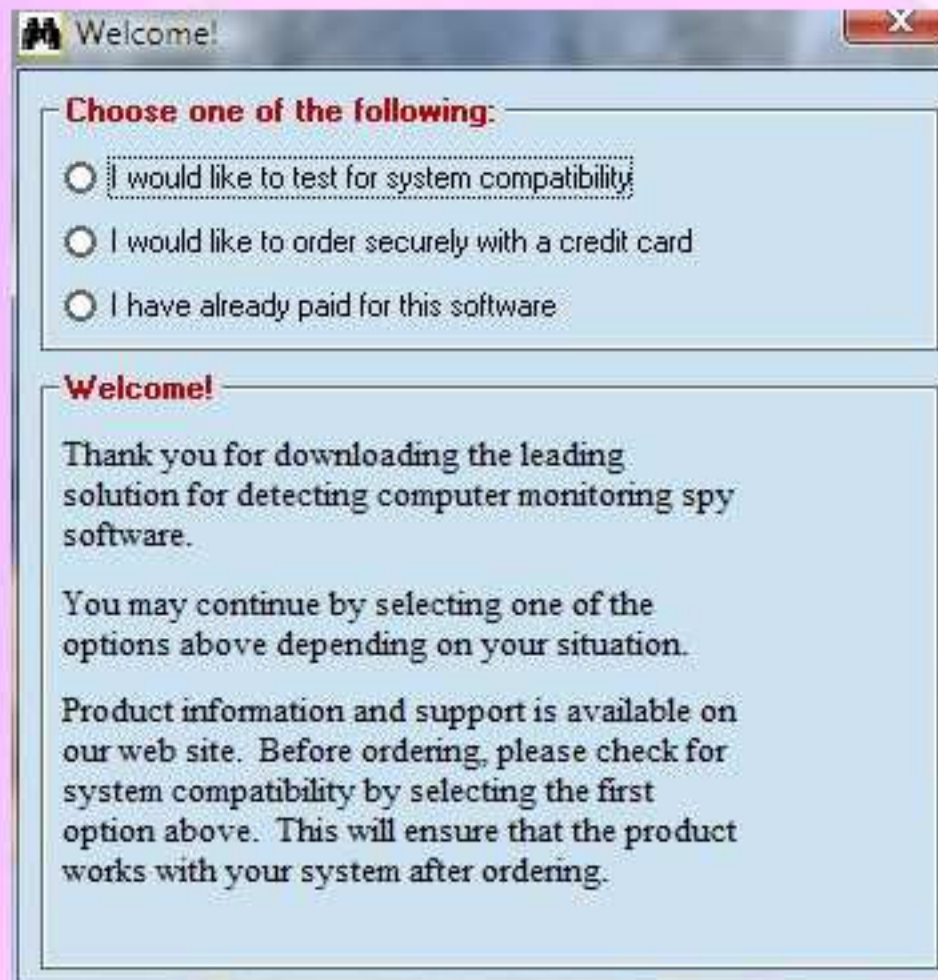


This is the final prompt before installation begins. If Vista pops up a warning that the app may not have installed properly, select the option "This application installed correctly".



Leave the box selected and SpyReveal will be run automatically by the installer.

POST INSTALLATION: Be sure to give the EXE files in the installation folder permission to access the Internet in your firewall, otherwise you will be unable to update the signature database!



When you first start the software, you will see the welcome screen above. Simply select the option that applies to your current situation. The Welcome box will then change to display the appropriate options. The option to test for system compatibility will give you a free trial to determine if the product will operate properly on your system. The trial is intended as a system compatibility test and will not complete a scan.

Welcome!

Choose one of the following:

- I would like to test for system compatibility
- I would like to order securely with a credit card
- I have already paid for this software

Enter your registration details

This software utilizes serial number tracking. Entering illegal license data will result in the software malfunctioning without notice.

Full Name (Case Sensitive)

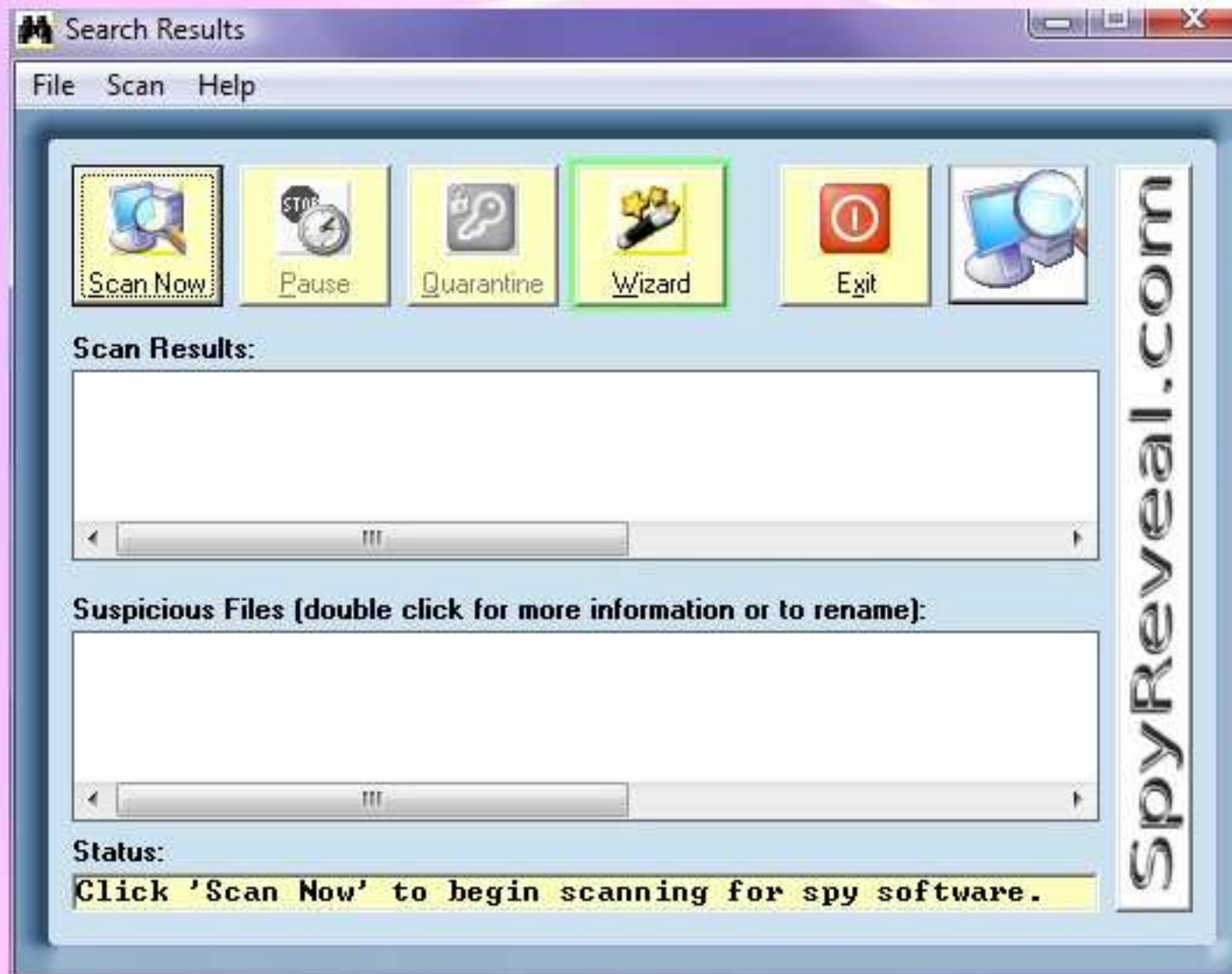
Your Name

Serial (Enter as #####-#####-#####)

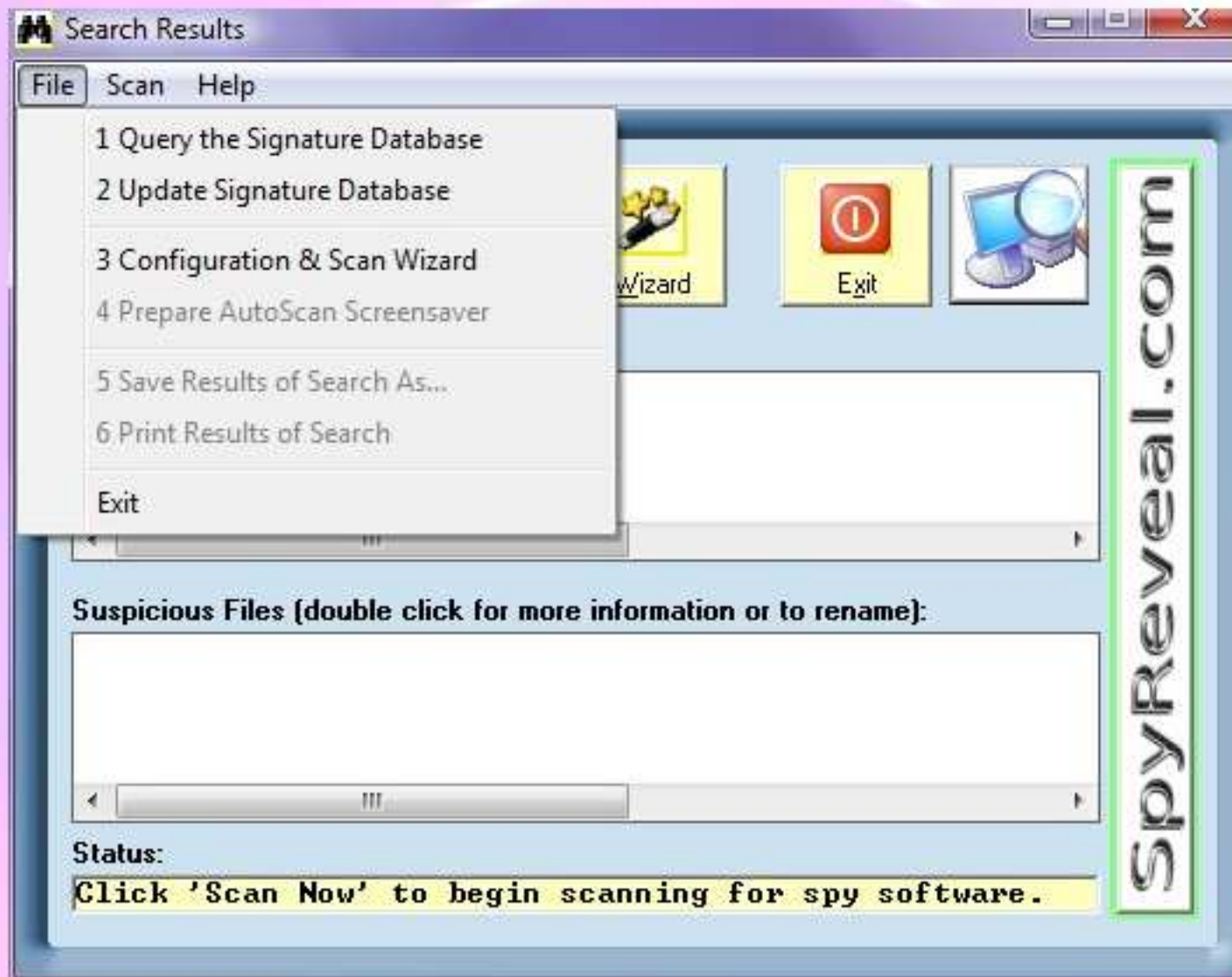
12345-67890-3580

Submit

After ordering the software, select the option "I have already paid for this software" as above. You can then enter your name and serial number as sent in the email after ordering. **DO NOT SHARE YOUR CODE WITH ANYONE** or you risk your license being disabled!



To start the software, use the icon on your desktop, or if you did not install icons, navigate to where you installed the software and double click the "RunProgram" icon. Vista users will be prompted with a security dialog saying that "Vista Launcher" needs permission to continue - you must approve to run the product. When you first start SpyReveal, you will be presented with this screen.



When you click the File menu you can access the Query Database (1) option, Update Signature Database (2), the Configuration & Scan Wizard (3), and Prepare AutoScan Screensaver (4). Options (5) and (6) do what they say and allow you to keep a copy of the results for future reference. Each of these are described in more detail later.

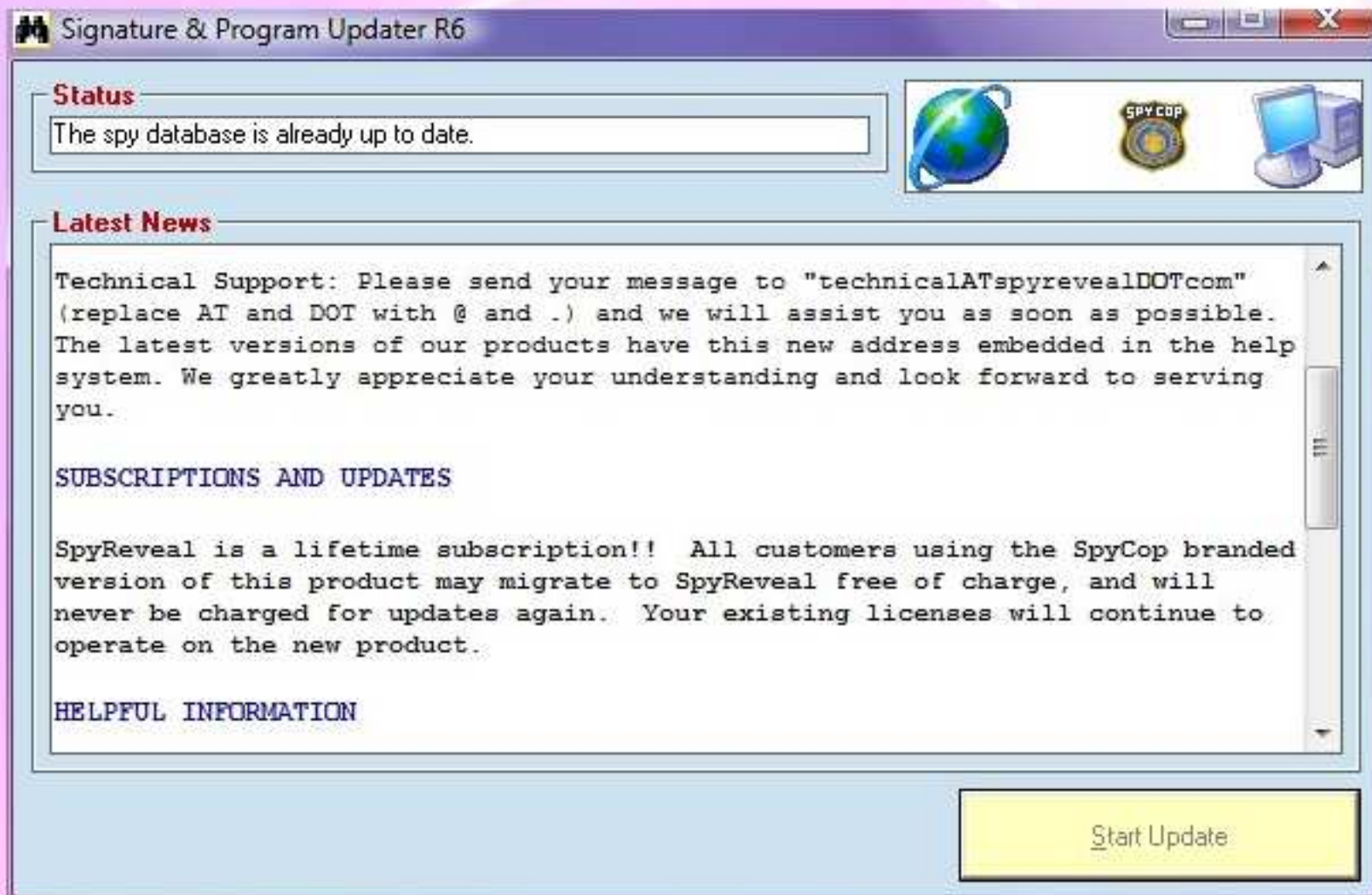
Query Signature Database

Enter the name of a spy program you've heard about and want to see if it can be detected.

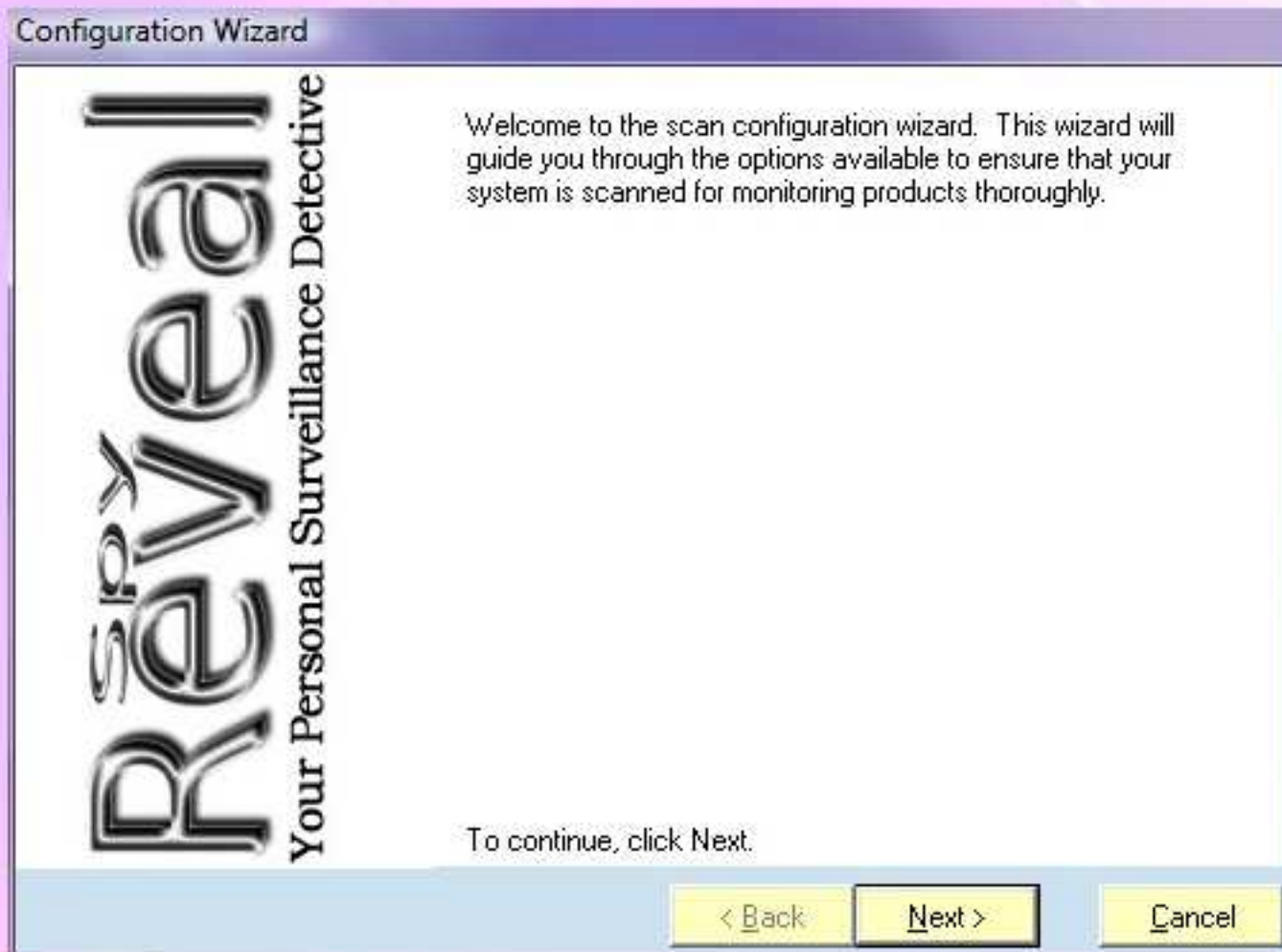
If a program is not found in the database, please click "Report a Spy" to send us a report for examination. Be sure to include the download location for the product in your message.

Name of Spy Program

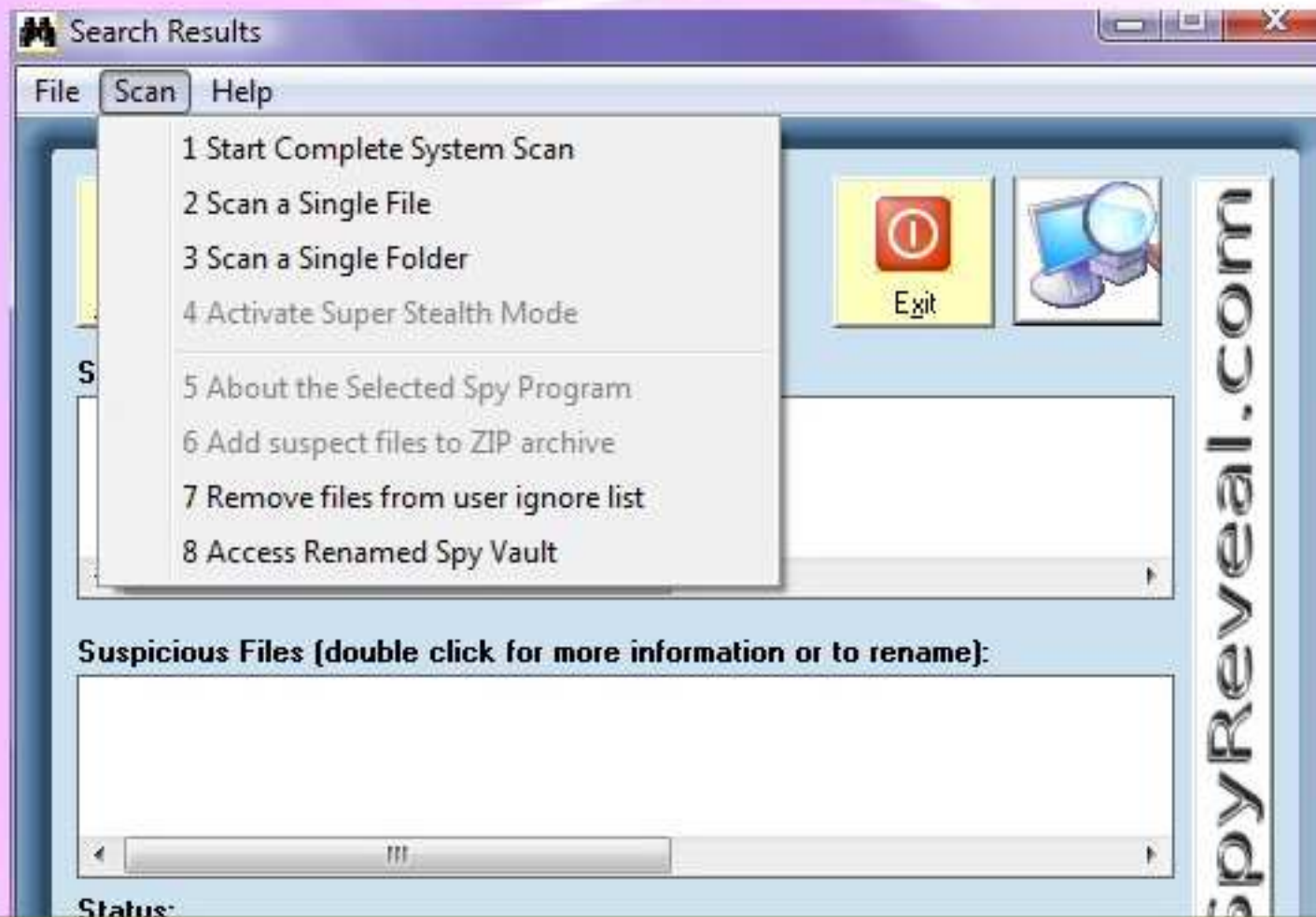
This is the Query Database dialog accessed via option (1) under File. This allows you to determine whether a spy program you heard about can be detected, and if not, to easily report the new program to us. When Querying the signature database, be careful to spell the spy program's name accurately and in the same way the manufacturer does. For example, enter just "Spy Program" instead of "Company's Spy Program v1.0".



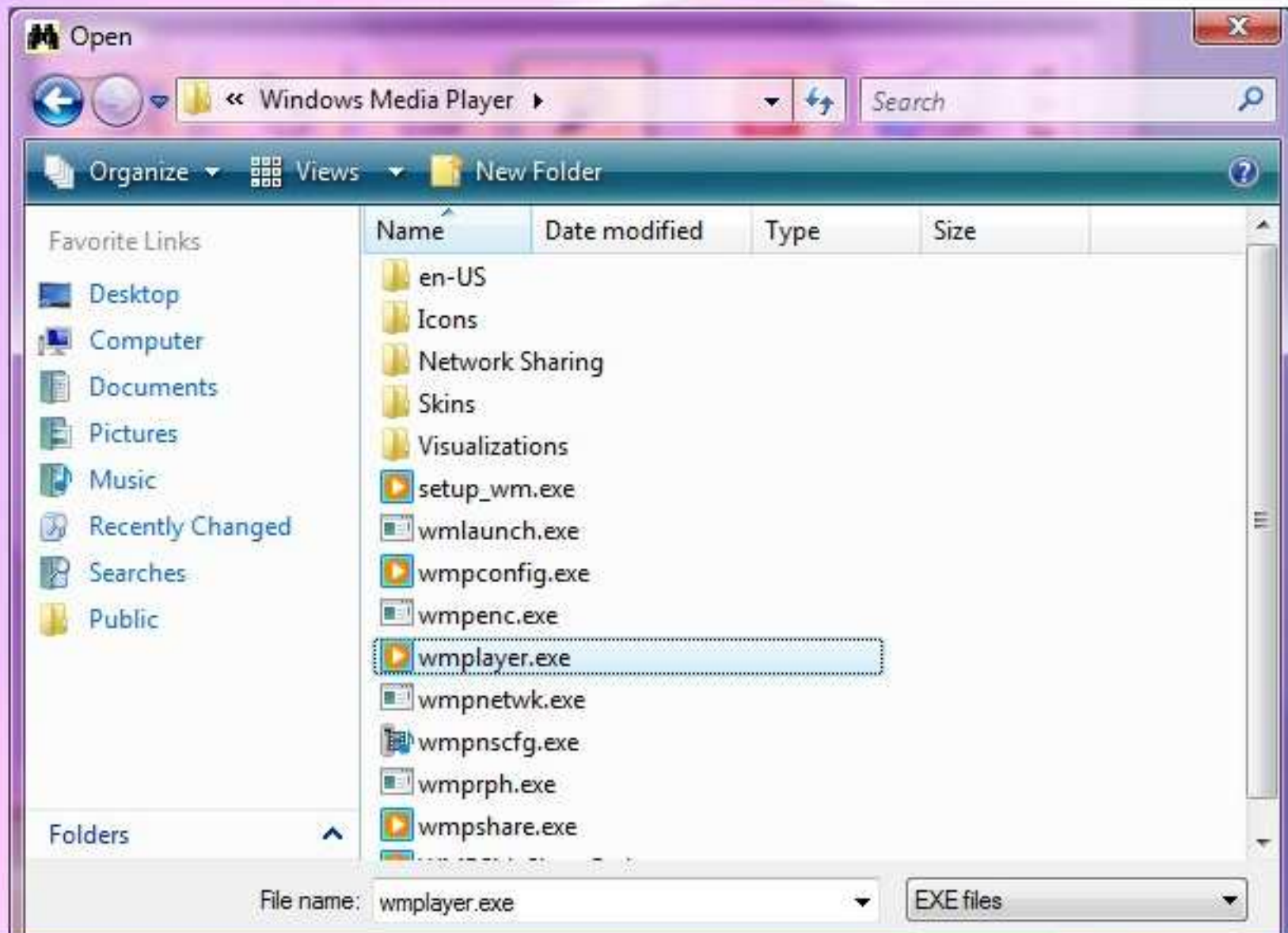
This is the database update dialog. We **HIGHLY** recommend that you update your database before running a scan to ensure that you have the most up to date database on your machine. The process takes only a minute or so even on a 28.8 modem. The statistics section will be revised after an update is completed. The Latest News section will let you know of important product updates and surveillance threats.



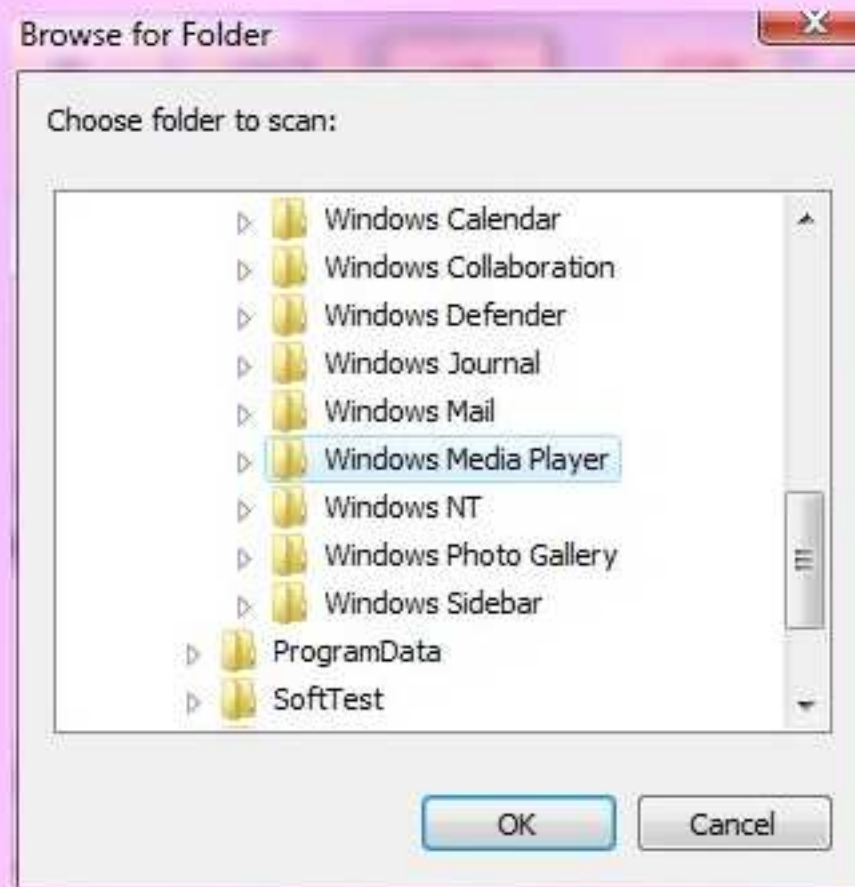
Clicking the Wizard button will display this screen. The wizard will guide you through each configuration options. The wizard contains options to select the drives/partitions to scan, enable fast maintenance scanning, password protect the program, silently send scan results via email and automatically update. Each of these options is described in detail inside the wizard and so is not included here.



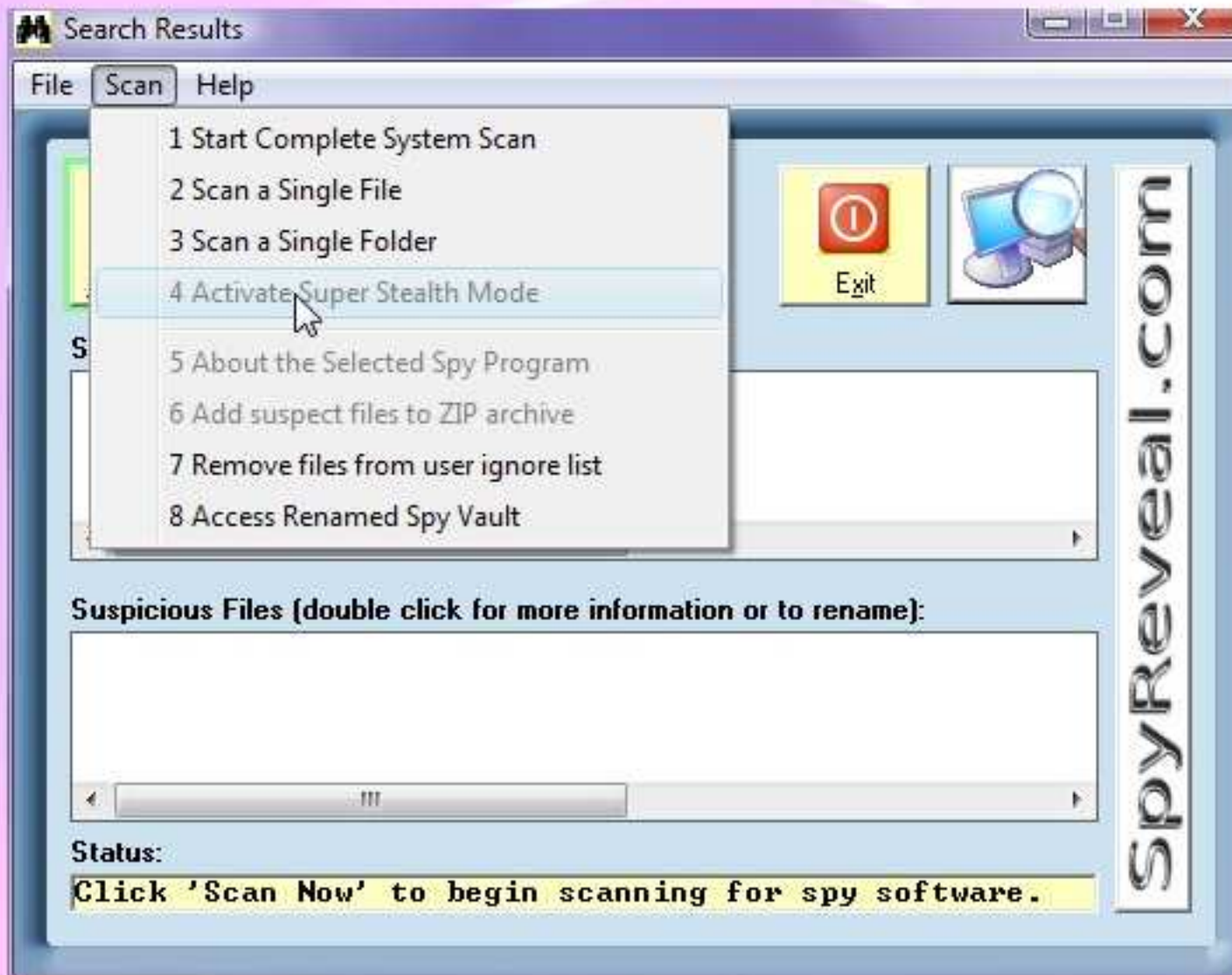
The scan menu contains the various scanning options available in SpyReveal. Start Complete System Scan (1) does the same thing as clicking Scan Now in the main interface. Scan a Single File (2) allows you to scan one file that you are suspicious of. Scan a Single Folder (3) allows you to scan an entire program folder on your system. Lastly, Activate Super Stealth mode (4) will temporarily revert your system to the way it was before any programs were installed. Option (5) does the same thing as the Quarantine button in the main interface. Add Suspect Files to ZIP archive (6) allows you to easily package up the files detected during a scan so that you can email them to us for confirmation. Remove files from user ignore list (7) allows you to remove files that you optionally set the scanner to ignore inside the quarantine dialog. Access Renamed Spy Vault (8) allows you to easily restore a file after a rename operation.



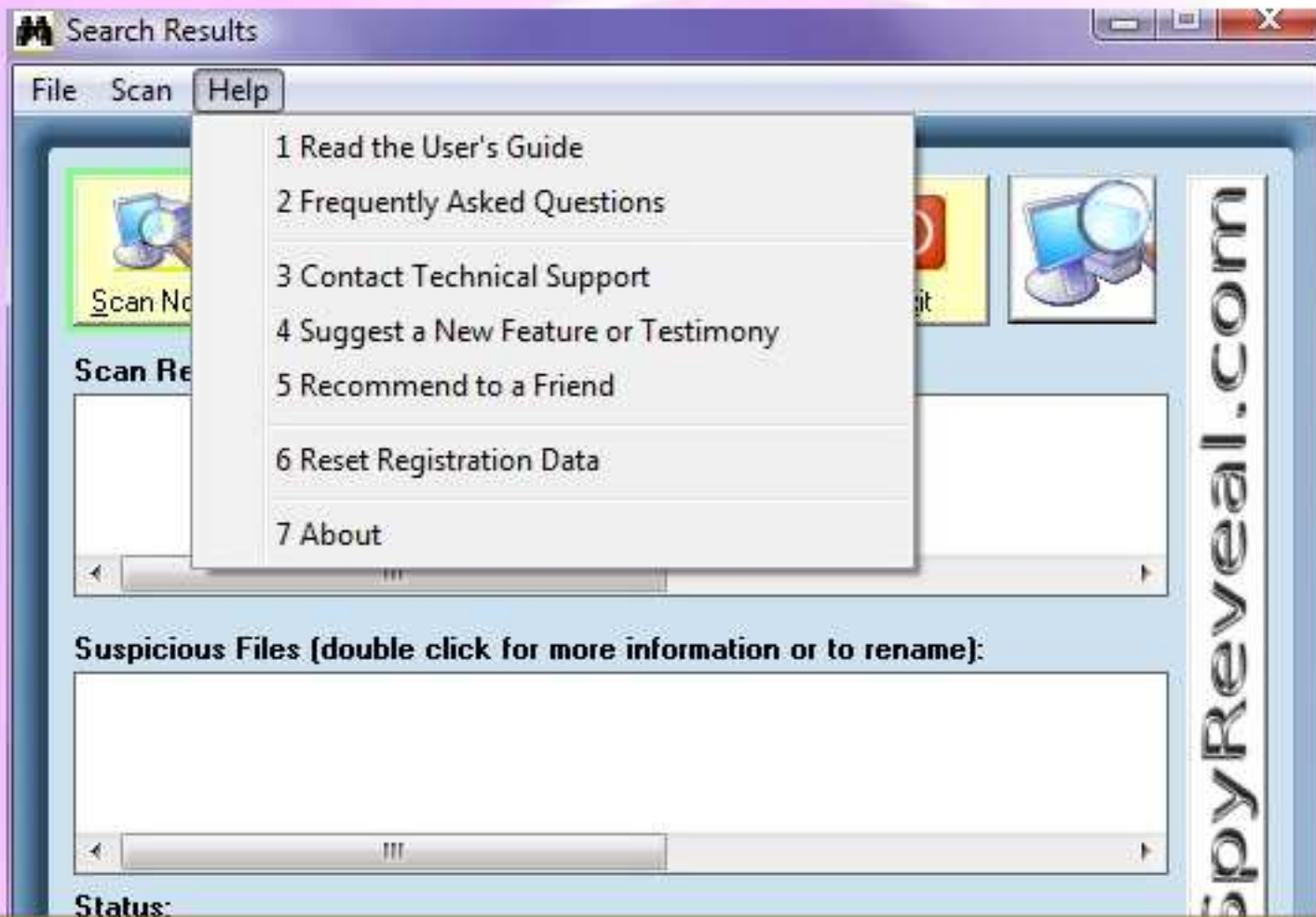
When you select option (2) under the scan menu, you are presented with the standard Windows browse for file dialog. Use this to navigate to the program file that you would like to scan and click ok to begin scanning that file. Select the type of file in the bottom combo box to show either EXEs, DLLs, VXD's or SYS files.



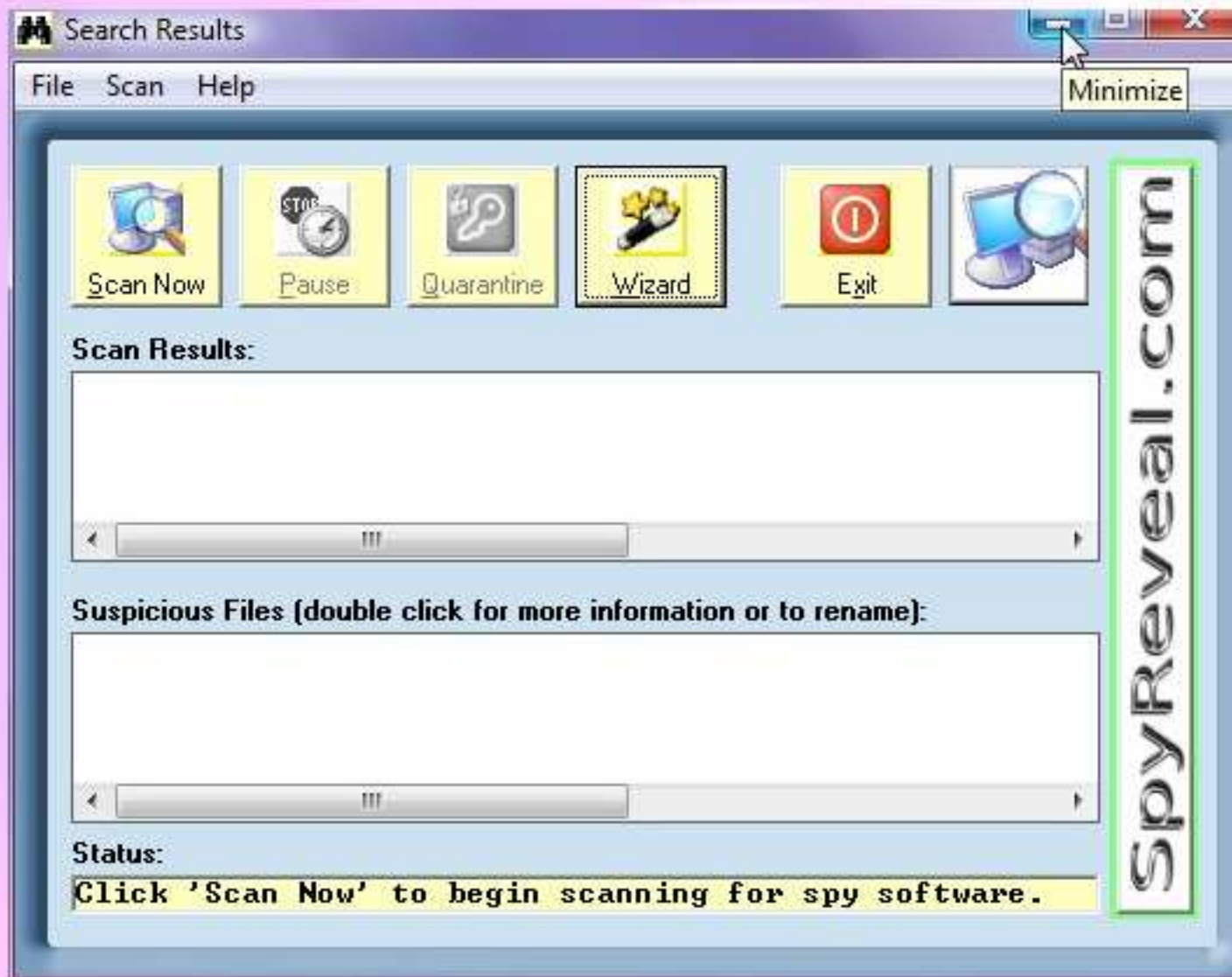
When you select option (3) under the scan menu, you are presented with the standard Windows browse for folder dialog. Use this to navigate to the program folder that you would like to scan and click ok to begin scanning that program. You can also select a drive and that entire drive will be scanned. Use this option if you see a suspicious folder on your drive and you want to be sure that it is not a spy program.



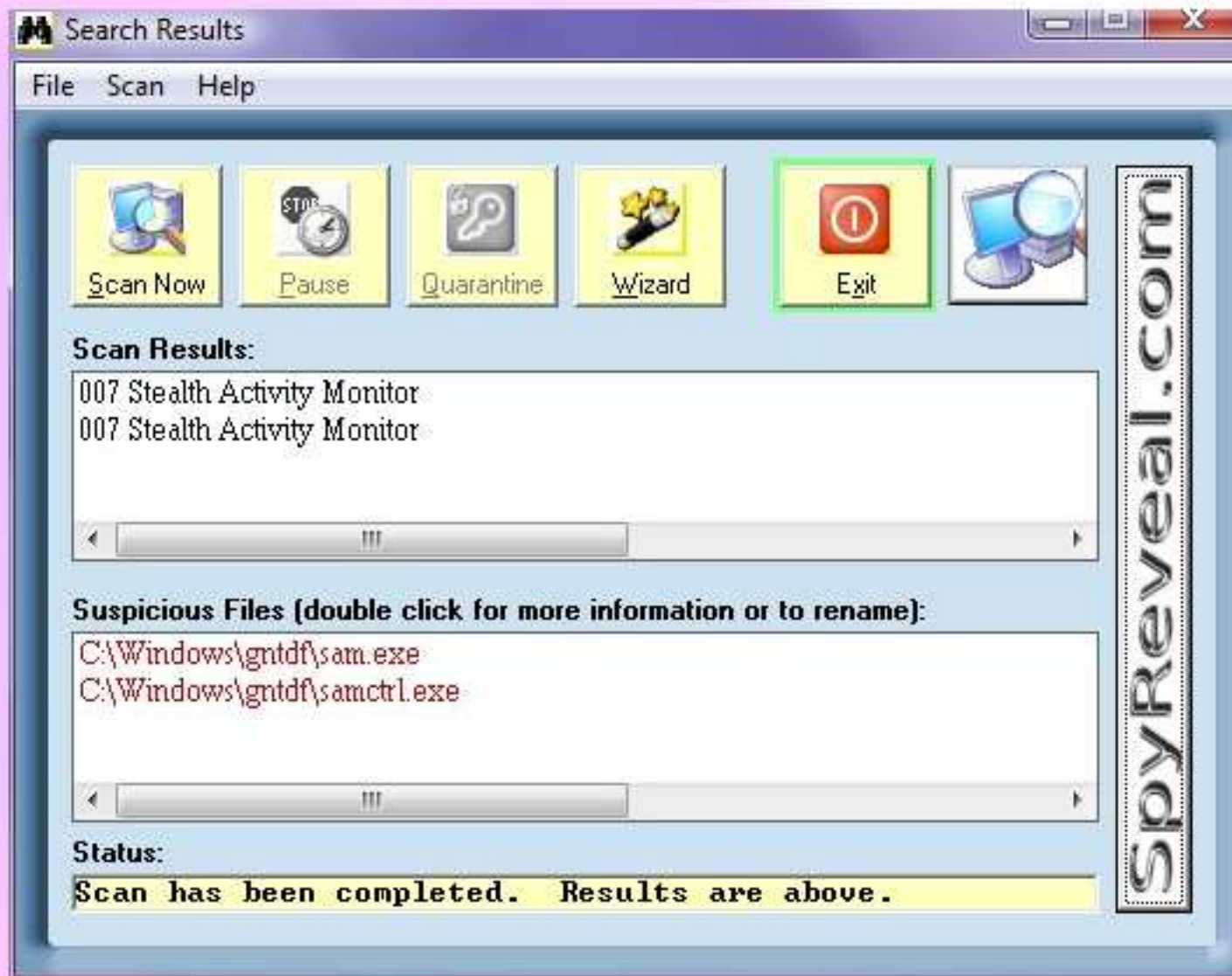
Accessed by selecting option (4) under Scan, Super STEALTH mode will temporarily revert your system to a "clean slate" by closing any programs not shipped with Windows. This option does not work on all systems - if this option does not work on your system, you can get the same effect by scanning in Windows Safe Mode. NOTE: This option is not available to Vista users due to advanced Windows security.



The Help menu allows you to obtain additional information on SpyReveal. Read the User's Guide (1) will bring you to this page in your default browser. Frequently Asked Questions (2) is a large document containing information in Q&A form. Options 3 and 4 allow you to communicate with us via email. Option (5) allows you to easily point a friend to the SpyReveal web site. Reset Registration Data (6) will cause the program to revert back to the trial version. Lastly, About (7) will display program version information, database date and your license information.



Keep in mind that if you are doing a full system scan, you do NOT have to sit there and watch SpyReveal run! As SpyReveal is a very thorough program, the scan may take a while on a slow or loaded system. Click the minimize button as shown above to have SpyReveal sit in your task bar. While minimized, SpyReveal switches itself to low priority meaning that your other programs will not be affected. You can continue to do word processing, net surfing or game playing without a significant impact on performance.



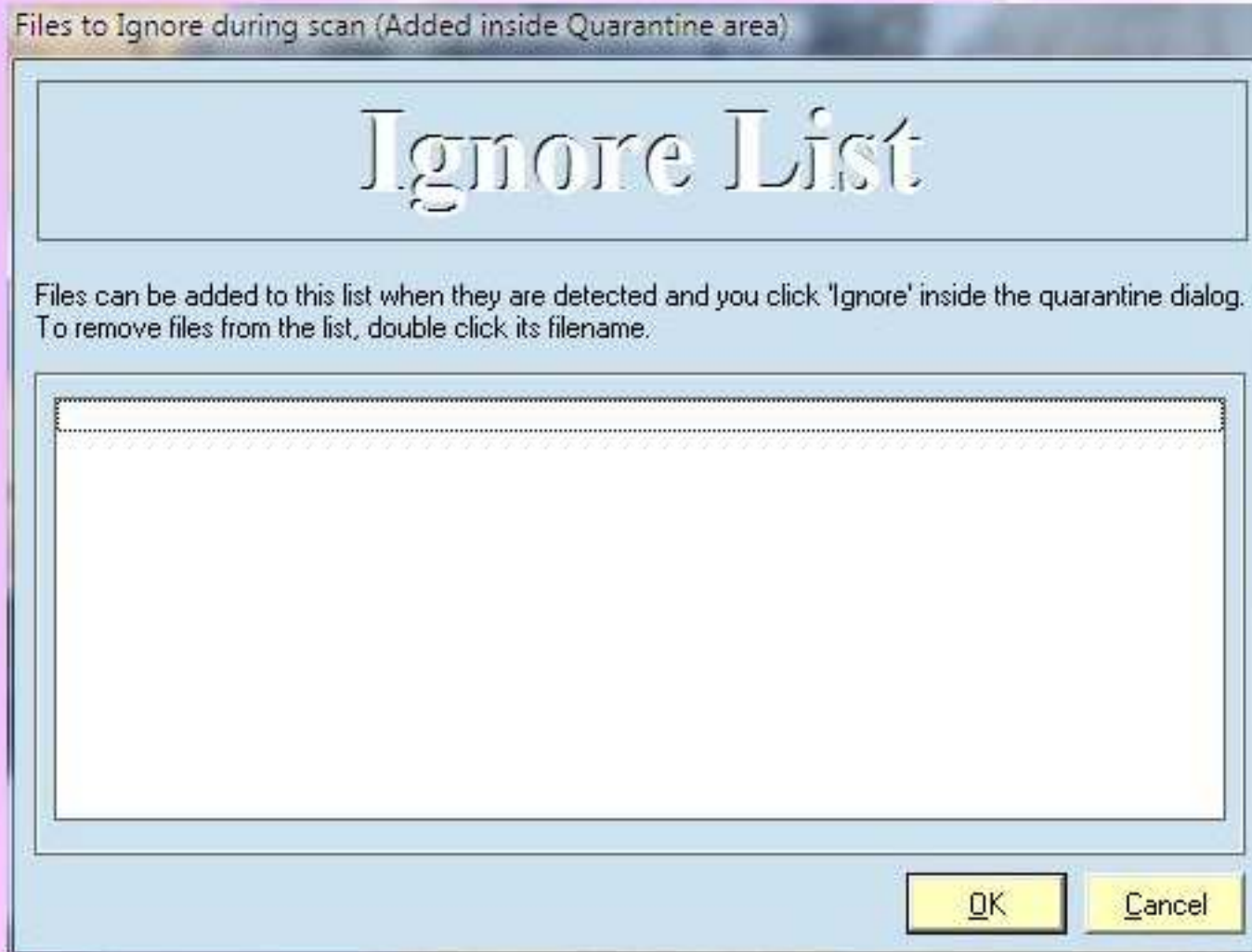
After a scan completes, hopefully you will see nothing listed in the results section, and the status line will indicate your system is free of spy software. However, if a spy program is detected, you may see a screen similar to the one shown above. The top list under Scan Results tells you the name of the spy, and the bottom one points out the suspicious file. The lists are linked, meaning that if multiple spies are found and you click a line in either list, the other one will move to the corresponding entry. To get more information on a spy program or to disable it, select the spy from the list and then click Quarantine which has the yellow question mark on it.



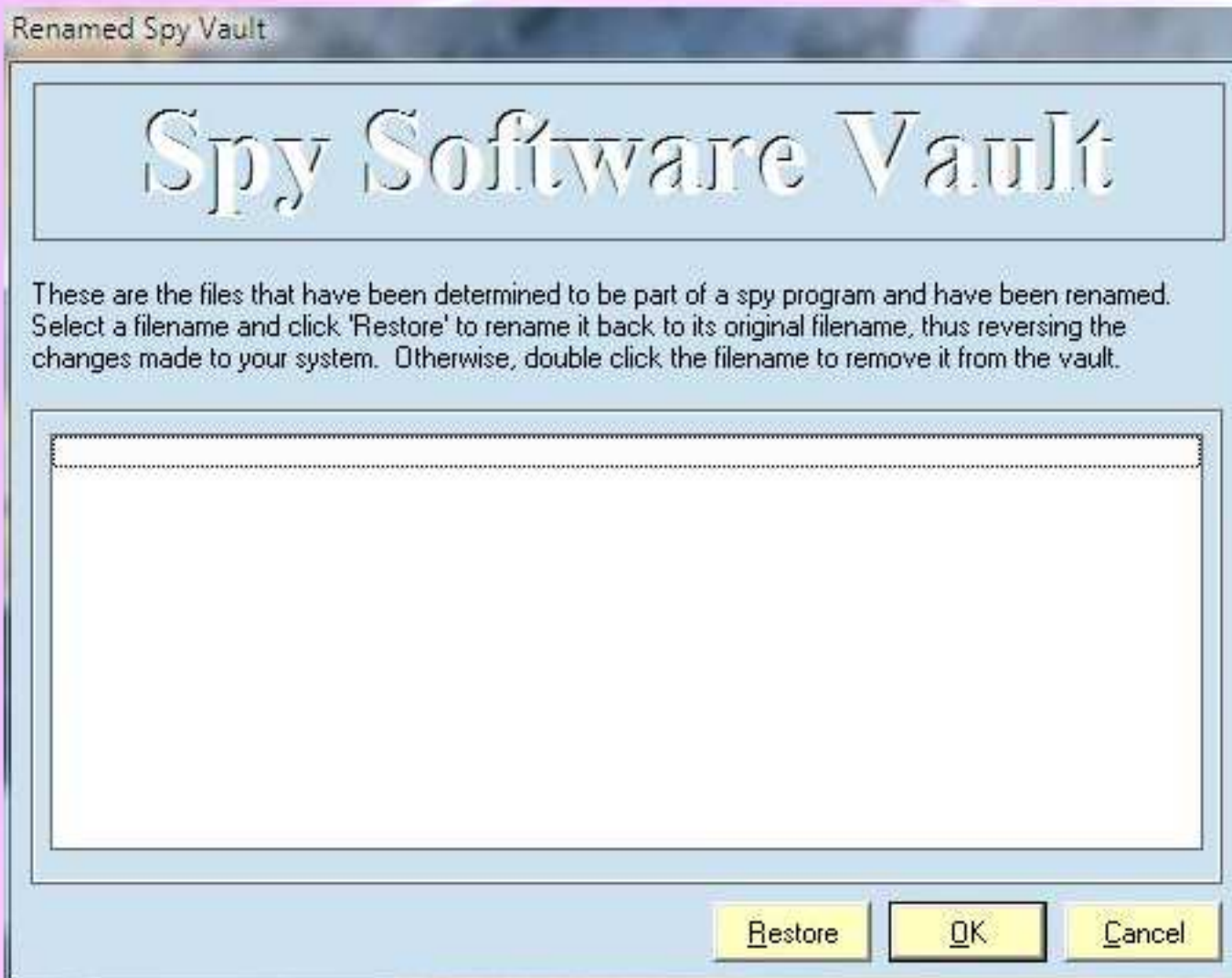
After selecting a detected spy program in the list, the Quarantine button becomes available. Clicking Quarantine presents you with this dialog. Here you can see when the file was installed, and its size. Click the Rename button to rename the file by appending a .SPY extension to it and add it to the vault. This will effectively disable *most* spy programs because they can no longer find a crucial operating file. You should restart your system after a rename operation and rescan to ensure that the file is no longer active. Click Clipboard to copy the displayed information to the clipboard. Click Google to do a quick Google search on the spy program. Google enables you to find out where the spy program can be obtained and the manufacturers web site from which you can contact them and ask for proper removal instructions. Ignore allows you to tell the scanner to skip the file in the future. This is useful for certain false alarms and in the case that you have a program to monitor your children, etc.



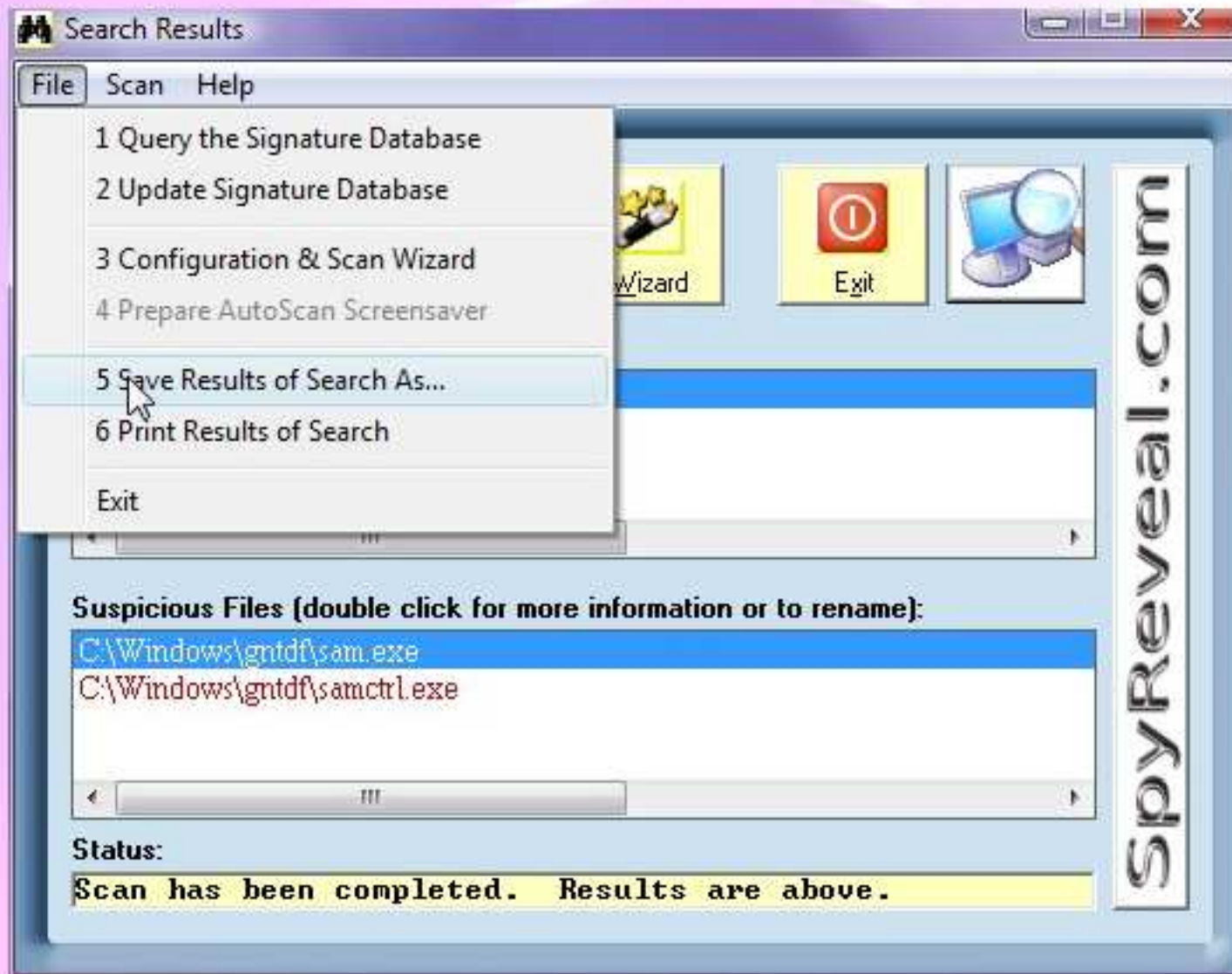
IMPORTANT: If a spy program is detected, Click File, Save Results and save them into a text file on your desktop. Next, use the "ZIP Files" option under the scan menu to archive the files together. Start a new email message to our support department and paste the contents of the results TXT file into the message with subject "Please Confirm" and attach the ZIP file. We will then be able to confirm the detection and assist with removal or let you know that it's a false positive.



The ignore list, accessible via the Scan menu, enables you to remove files that you have previously marked to ignore within the Quarantine dialog. To remove a file, simply double click its name within the dialog and it will be removed. Click OK to save the new list.



The Spy Vault is accessible via the scan menu and permits you to restore a previously renamed spy file. This is useful should your system become unstable after a rename operation or if you need to re-engage the spy to remove suspicion that you know about it. To restore a file, select it in the list and click the Restore button. You should restart after a restore operation to allow the file to load. Otherwise, double click the line to remove it from the list.



Lastly, if a spy program is found during a complete system scan or a folder scan, options (5) and (6) will become active in the File Menu. Save Results (5) will allow you to save the list of programs and suspicious files found to a text file. Print Results (6) will send a copy of the results to your default printer.

Ensuring Your System is Completely Scanned

- Ensure that you are running SpyReveal as an administrator. This is important so that the scan engine has access to critical system areas.
- Update your database via File, Update Database each time you scan. We update frequently, adding new threats, correcting false positives and improving the scan engine.
- It is important that you ensure maintenance scan mode is not enabled in the SpyReveal wizard and do a complete scan from time to time. Maintenance mode is for quick checks only and may not find all spy software.
- Scan in Windows safe mode with command prompt. Your other security programs may interfere with the scan and this for the most part keeps them from loading. To run a safe mode scan, restart and press F8. When the Windows boot menu appears, select the "Safe Mode with Command Prompt" option. When you get the C:\> prompt, enter the command appropriate to your OS, <ENTER> means press the enter key:

Windows Vista: C:\RunSC <ENTER>

Other Windows C:\WINDOWS\RunSC <ENTER>

Command Line Parameters:

You can pass parameters to automate the scanning process from the command line. This is useful for automatically scanning many machines on a LAN or scheduling scans.

Syntax: {file with binoculars icon}.exe [parameter]

/SCAN: Automatically start scanning as soon as the program loads.

/UPDATE: Update the spy database and then exit.

/SCANEXIT: Start the program, scan and then exit. Results are saved in the program folder as SCANRESULTS.TXT

/AUTOSAVE: Automatically logs the results of each scan to SCANRESULTS.TXT

/SCANHIDDEN: Scan the system silently - if a password is set it will not be required. Results are saved in the program folder as SCANRESULTS.TXT

/NOPOPUPS: Can be used with other parameters to prevent any error or status messages from popping up during a scan. Intended for use with /SCANHIDDEN or /SCANEXIT.

Scheduling Periodic Scans:

By using the built in Windows Task Scheduler, you can have SpyReveal scan at periodic intervals whenever you want. An easy to follow tutorial is available:

Additional Notes:

- Be sure to periodically run SpyReveal in Windows Safe mode and do a complete scan. This helps to ensure that key system areas can be thoroughly checked. You can also scan in Safe Mode Command Prompt only. To Start SpyReveal in this mode, type RunSC at the command prompt.
- You can drag & drop files and folders from Windows Explorer onto the Scan Now button to scan them.
- The Scan Folders option will scan only 75% of the files in trial mode..
- Select File, Print in your browser to print a hard copy of this manual.

Visit the Frequently Asked Questions section

Download a PDF version of this tutorial for

Visit the products section of our web site to

Download the latest version, free.

That's it! We recommend that you visit the FAQ for additional troubleshooting details. The orange buttons above will open the associated page in a new browser Window.